

Corum 4057

Product Information

FEATURE

- Derived from natural sources.
- Highly biodegradable.
- Mild and non-comedogenic.
- Leaves a soft and moisturized feeling on the skin.

INCI NAME

TEA Lauroyl Glutamate

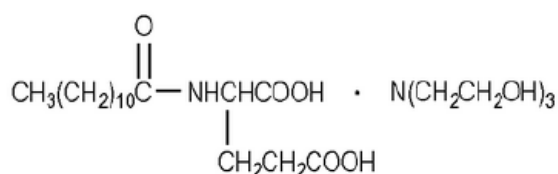
CAS No.

53576-49-1

EINECS No.

258-636-1

STRUCTURE



CHARACTERISTICS

Appearance	Clear liquid
Odour	Typical

SPECIFICATIONS

pH	5.0-7.0
Solids (%)	28-32

DESCRIPTION

Corum 4057 is derived from natural sources, and highly biodegradable. It is mild and non-comedogenic, good skin affinity, leaves a soft and moisturized feeling on the skin. Furthermore, its foaming ability is good, even in hard water.

STORAGE

Protect from contacting with air, light and moisture.

APPLICATIONS

Corum 4057 function as mild co-surfactant is suitable for face, hair, body and baby cleansers.

Revision: 2018/10/19