

# HotFlux<sup>®</sup>

## Product Information

### FEATURE

- Low irritation
- Long lasting warming sensation

### INCI NAME

Vanillyl butyl ether

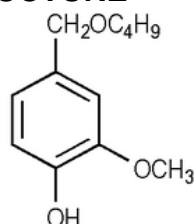
### CAS No.

82654-98-6

### ELINCS No.

444-010-7

### STRUCTURE



### CHARACTERISTICS

Appearance

Colorless to pale  
yellow liquid

Odour

Typical

### SPECIFICATIONS

Purity (GC) (%)

98.00 Min.

Moisture (%)

0.20 Max.

Specific gravity (20°C)

1.052 - 1.072

Refractive index (20°C)

1.5110 - 1.5210

### DESCRIPTION

HotFlux<sup>®</sup> is a warming agent with low irritation profile.

HotFlux<sup>®</sup> can be added to enhance and length the cooling effect.

### STORAGE

Protect from contacting with air, light, heat and moisture.

Do not expose to extreme temperature. (store in a cool and dry place at room temperature)

### APPLICATIONS

It is suggested for massage cream/oil, warming cream/oil and slimming cream/oil. It is recommended to add into the formulation at the last step.

Revision: 2023/10/23